



Temcana 3C & 6C



Room Sealed
Wall Mounted
Convactor Heaters



Vulcana Gas

30 Bridge Road, Haywards Heath, West Sussex, RH16 1TX

Tel: 01444 415871 • Fax: 01444 441433

Email: sales@vulcanagas.co.uk • Website: www.vulcanagas.co.uk

Warmth and economy from Temcana 3C & 6C

TEMCANA 3C & 6C

With energy costs climbing ever higher, the economics of heating offices, workshops and other areas such as classrooms can be an expensive business. The Temcana 3C & 6C balanced flue convectors with their modulating thermostats give reliable warmth at the level you need. What's more, being wall-mounted and room sealed, they provide a safe warmth. High grade stainless steel is used for the burners, heat exchanger, flue pipe and terminal while the exterior finish is in unobtrusive shades of grey. Safe, reliable and economic with outputs of 7250 and 14300 Btu/h respectively, the Temcana 3C and Temcana 6C are made for today's environment.

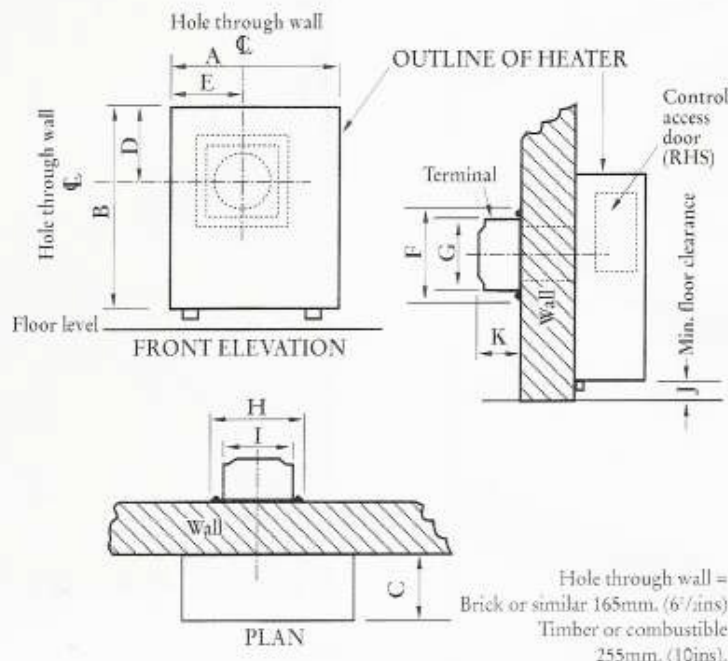
FEATURES AND DETAILS

- 1 Wall mounted
- 2 All stainless steel heat exchanger, burner, flue pipe and terminal
- 3 Integral modulating thermostat fitted
- 4 Self-energizing piezo ignition of the permanent pilot
- 5 Multi-functional gas valve with flame failure protection
- 6 Comes complete with screws, caulking compound, furnace cement and flueways suitable for wall thicknesses from 50 - 355mm
- 7 Long flueways available at additional cost for wall thicknesses up to 635mm
- 8 Liners for combustible walls available at additional cost
- 9 CE certificated.

TEMCANA EM EXTRA FEATURE

Solenoid valve fitted so convector can be switched on and off by external device e.g. clock.

Heater and flue guards are available for use with these heaters, where appropriate. Please note that heater guards are not designed to protect against temperature.



TECHNICAL DETAILS

TEMCANA 3C

	mm	ins	Heat input	2.8 kW (9600 Btu/h)
A	502	19 3/4	Heat output	2.1 kW (7250 Btu/h)
B	616	24 1/4	Gas type	Natural or LP
C	209	8 1/4	Colour	Shades of grey
D	229	9	Burner	Stainless steel
E	216	8 1/2	Heat exchanger	
F	279	11	Terminal	
G	220	8 5/8	Flue pipe	
H	279	11	Air duct	Galvanised steel
I	209	8 1/4	Gas connection	1/2in BSP internal thread
J	64	2 1/2	Clearances required	Left hand side 25mm (1in)
K	126	5		Right hand side 127mm (5ins)
				Floor (min) see J. Top 25mm (1in)
				If shelf fitted above, 200mm (8ins)

TEMCANA 6C

	mm	ins	Heat input	5.6 kW (19100 Btu/h)
A	770	30 5/16	Heat output	4.2 kW (14300 Btu/h)
B	645	25 3/8	Gas type	Natural or LP
C	230	9 1/16	Colour	Shades of grey
D	229	9	Burner	Stainless steel
E	360	14 3/16	Heat Exchanger	
F	279	11	Terminal	
G	220	8 5/8	Flue pipe	
H	279	11	Air duct	Galvanised steel
I	209	8 1/4	Gas Connection	1/2in BSP internal thread
J	89	3 1/2	Clearances required	Left hand side 25mm (1in)
K	126	5		Right hand side 292mm (11 1/2ins)
				Floor (min) see J. Top 25mm (1in)
				If shelf fitted above, 200mm (8ins)

All specifications are subject to alteration without prior notice.



Vulcan Gas

30 Bridge Road, Haywards Heath
West Sussex, RH16 1TX

Tel: 01444 415871 • Fax: 01444 441433

Email: sales@vulcanagas.co.uk

Website: www.vulcanagas.co.uk